

a group unconscious

**An exhibition at the
15th European Symposium
in Group Analysis**

**by the staff team on the
MA Art Psychotherapy**

Goldsmiths College, Whitehead Building Foyer

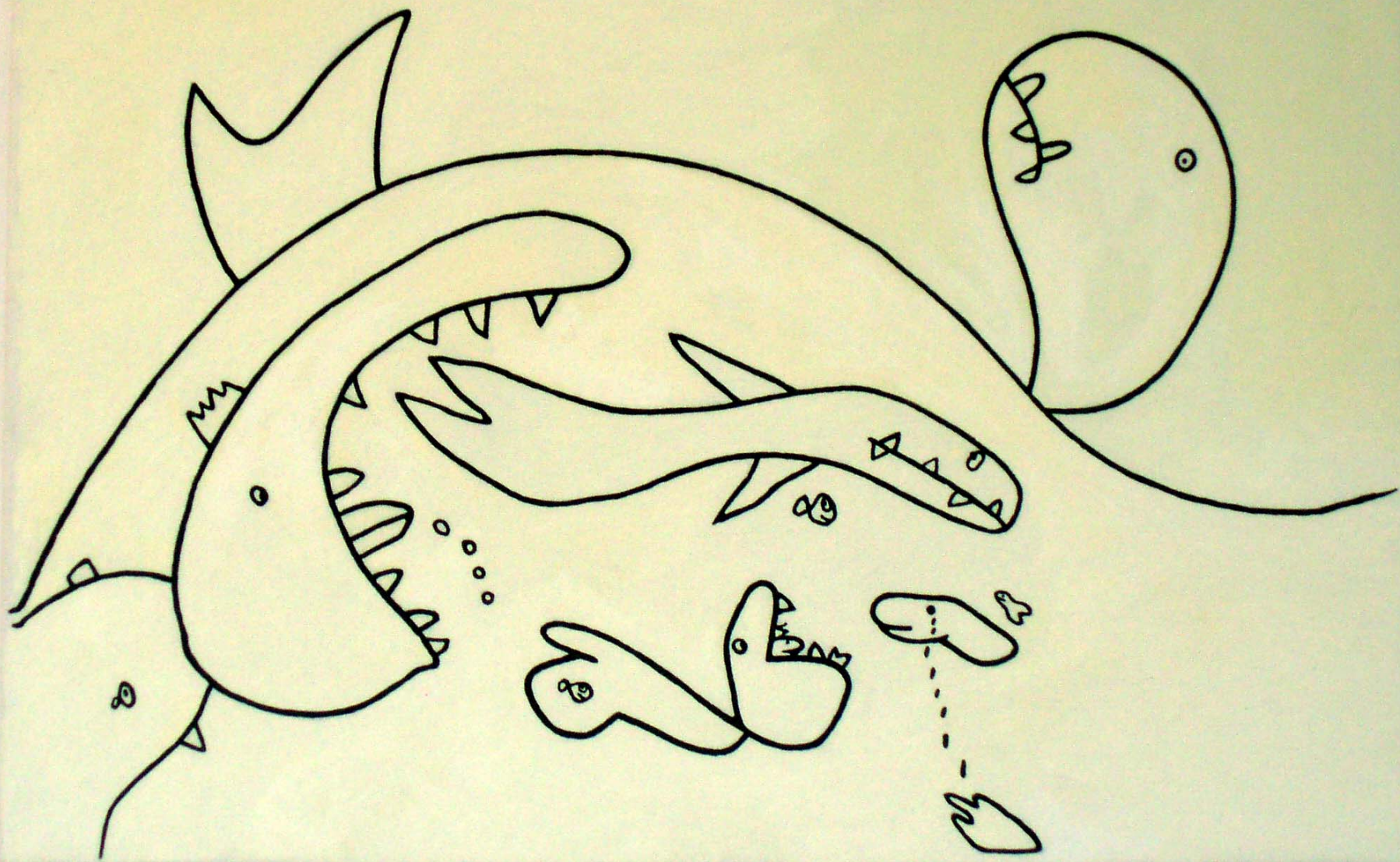
28 August – 9 September 2011



I'll let you
'system
be in my

dreams if
Ucs.'
can be

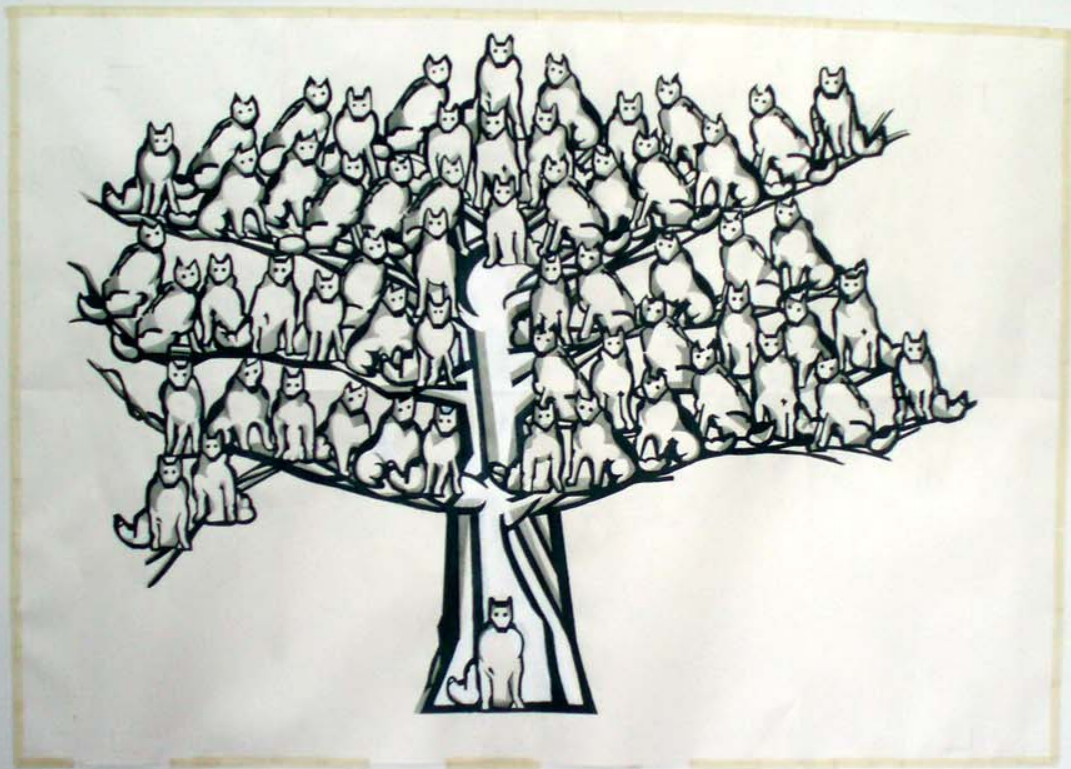
in yours

























Black Crow

stick out the head

tail

tail

point out





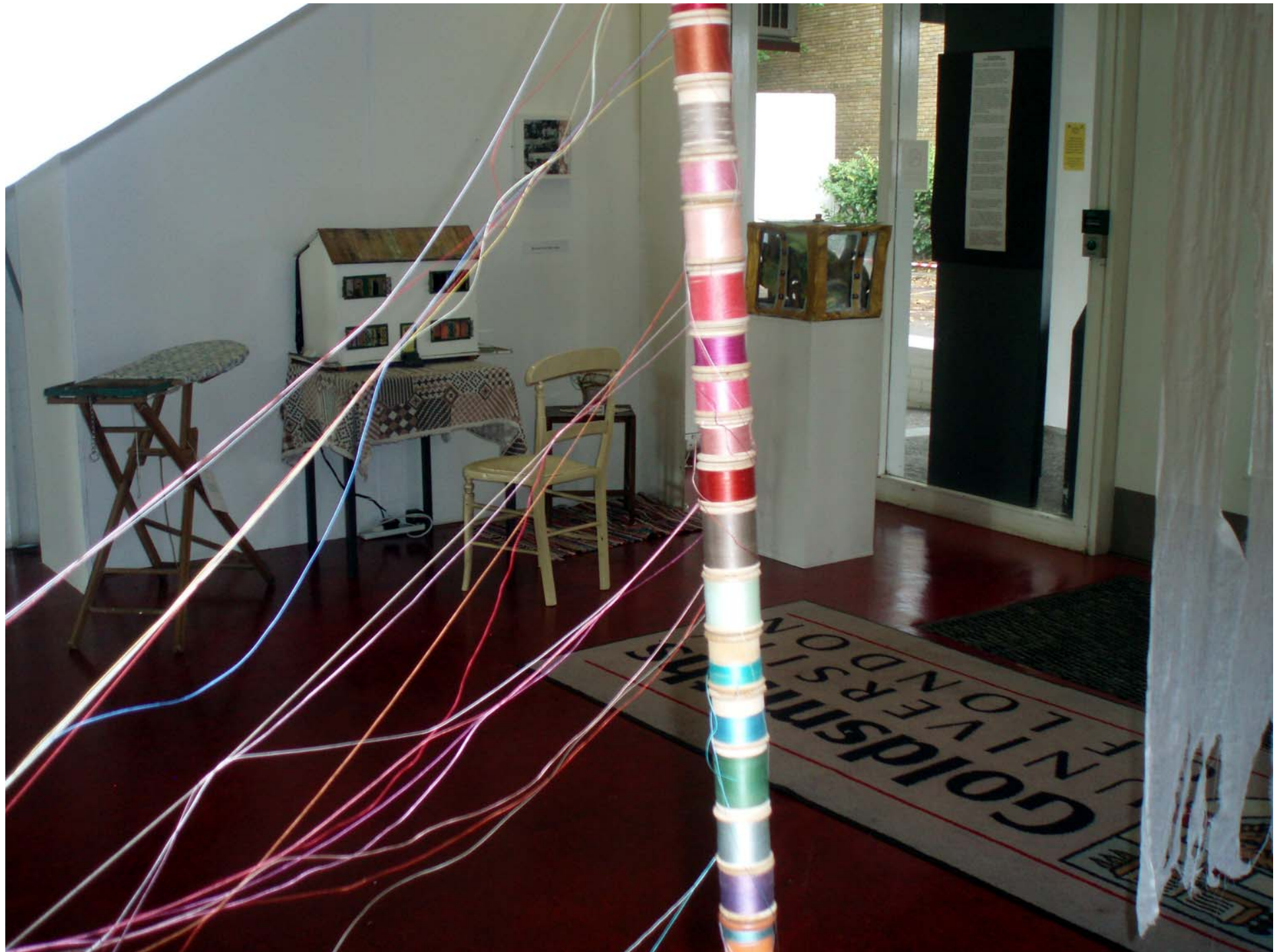


Designed
in 1911
from the
mother's coat
of arms
before she died

1911











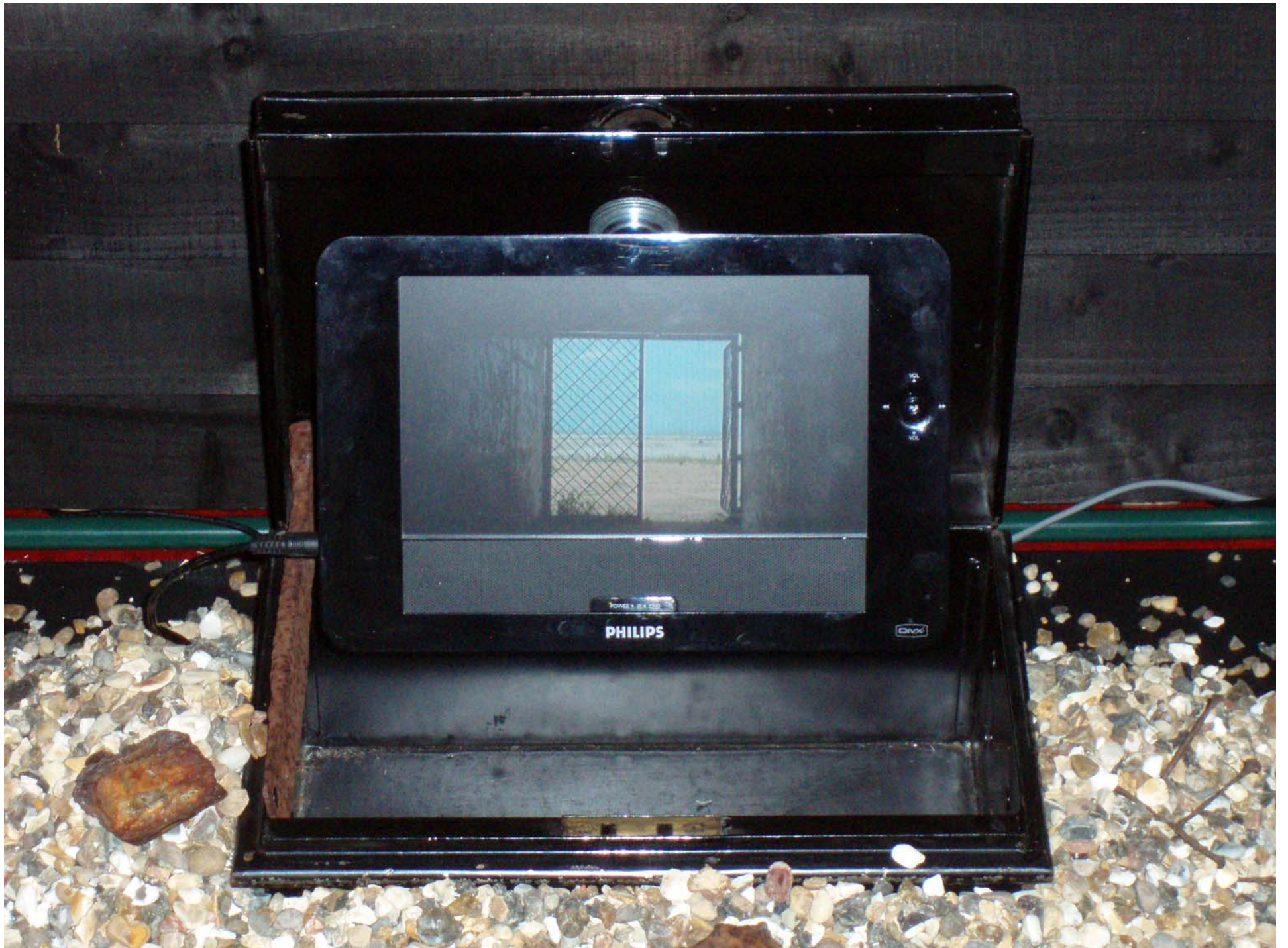




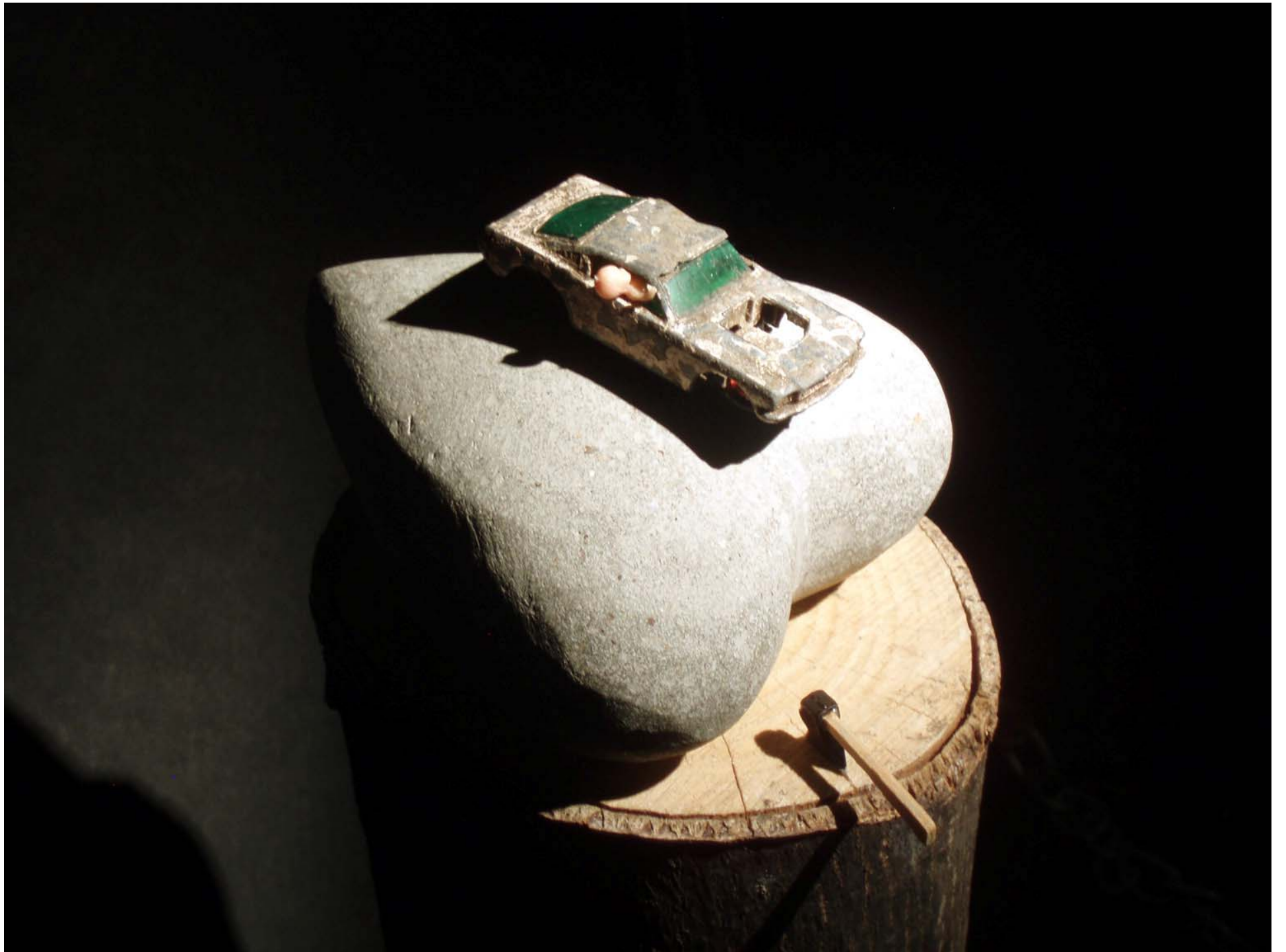
















Lean Less near Lean rising
Lean near and rising what
Lean with this when
that will be done than
what will

nest-coffin

Less. Less seen. Less seeing.
Less seen and seeing when
with words than when
not. When somehow than
when ?

LUXOR







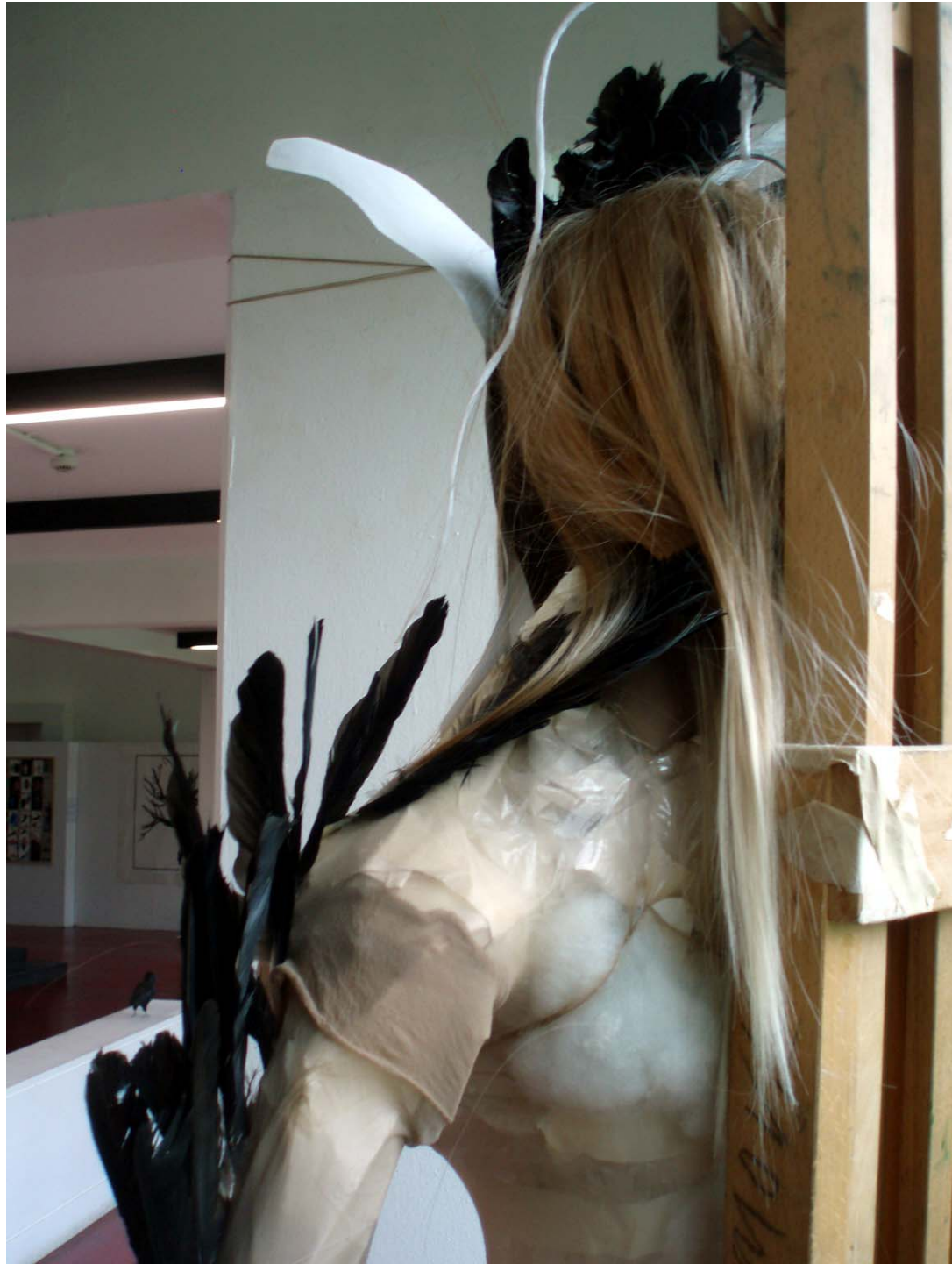


















A photograph of a brass plaque mounted on a dark, possibly black, door. The plaque is rectangular with rounded corners and is held in place by four small brass screws. The text on the plaque is engraved in a serif font and reads "DAS UNBEWUSSTE LEBT". The door has a vertical wood grain and a small hole near the top. To the left, a brass handle is partially visible.

DAS
UNBEWUSSTE
LEBT



Chris Brown, Kevin Jones, Dean Reddick, Robin Tipple,
Diana Velada, Jane Dudley Sally Skaife, Lesley Morris, Jill Westwood