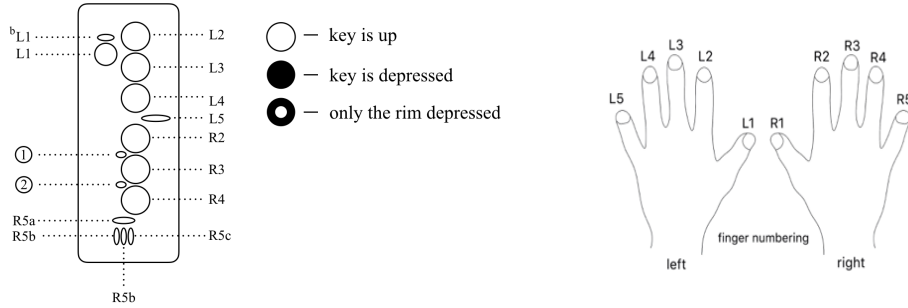


# ANNOTATION EXPLANATIONS

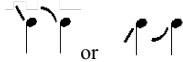
## Finger Numbering



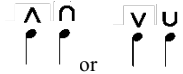
## List of Embellishments

### Short Inflections:

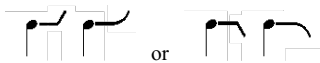
straight line played with fingering; curve played with pitch bending



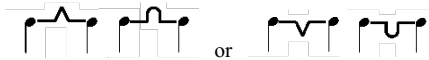
play a quick fluctuation at the start of a note



play a quick fluctuation just after a note started



play a quick fluctuation at the end of a note



play a quick fluctuation between two notes

### Gradient – Density Inflection:

*i.* play a continuous fluctuation (line indicates the speed)

### Tremor:

*tr.* trill the finger(s)

shake the flute left and right

### Note Bending:

pitch bending down; pitch bending up

### Continuous Note Bending:

line indicates the relative pitch and bending speed

### Harmonic Fingering:

diamond shaped note indicates finger to be used; round shape note indicates actual pitch

### Breath Tone:

- b. play only with air
- b.t. play tone with large extent of air sound
- t. play normal tone

### Trill Key:

① partly depress the first trill key; ② partly depress the second trill key

### Flutter Tongue: flz.

### Speaking Embouchure:

blow the air with the embouchure in speech position (shh, chew, tu, ch-u, sh-u, shua, chu-ke cha-ke)

### Play with Singing: s.

### Overblow: o.b.

### Key Click: ⊗