

No dig, no ride

Maintaining DIY designed bike trails

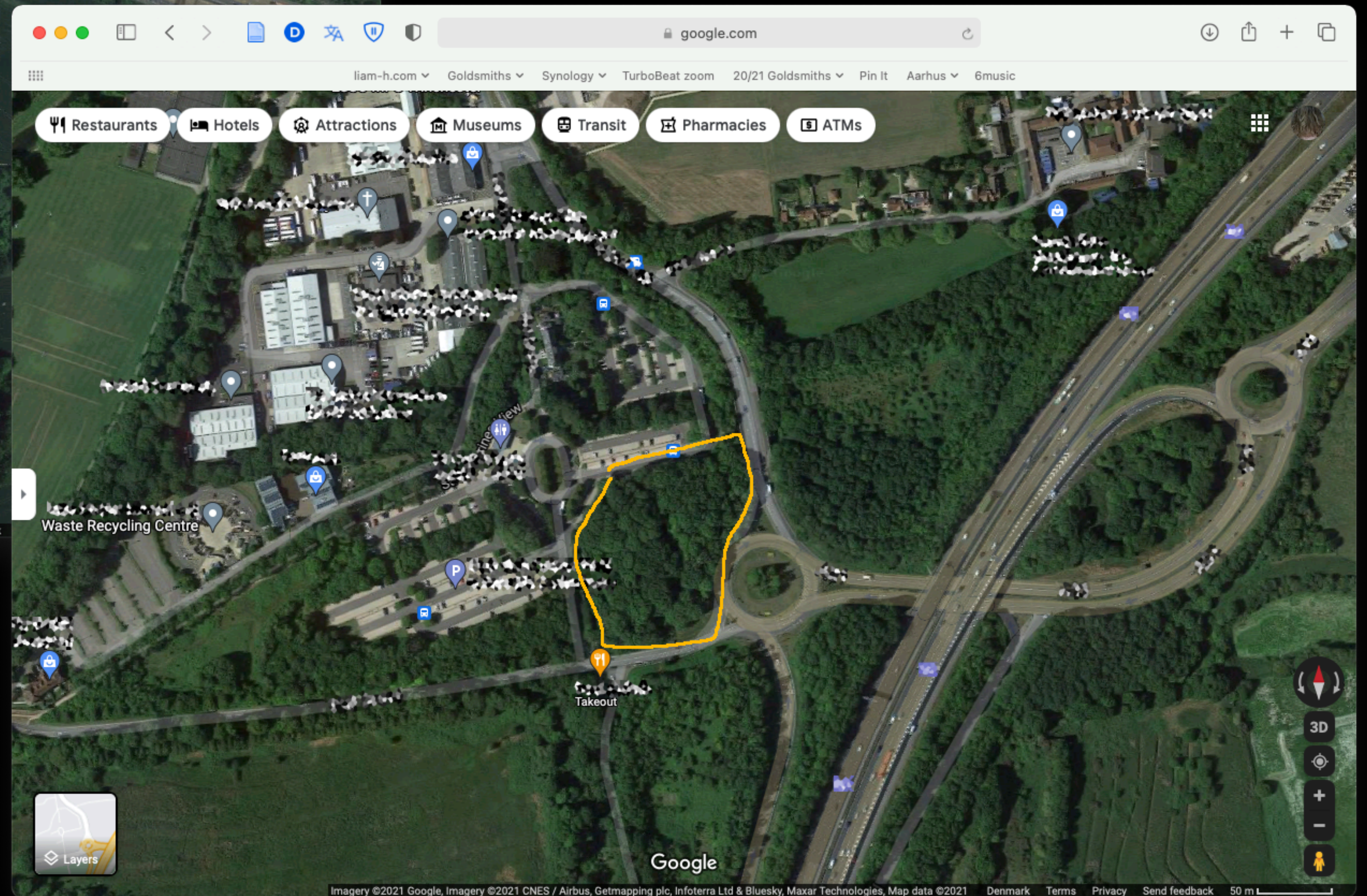
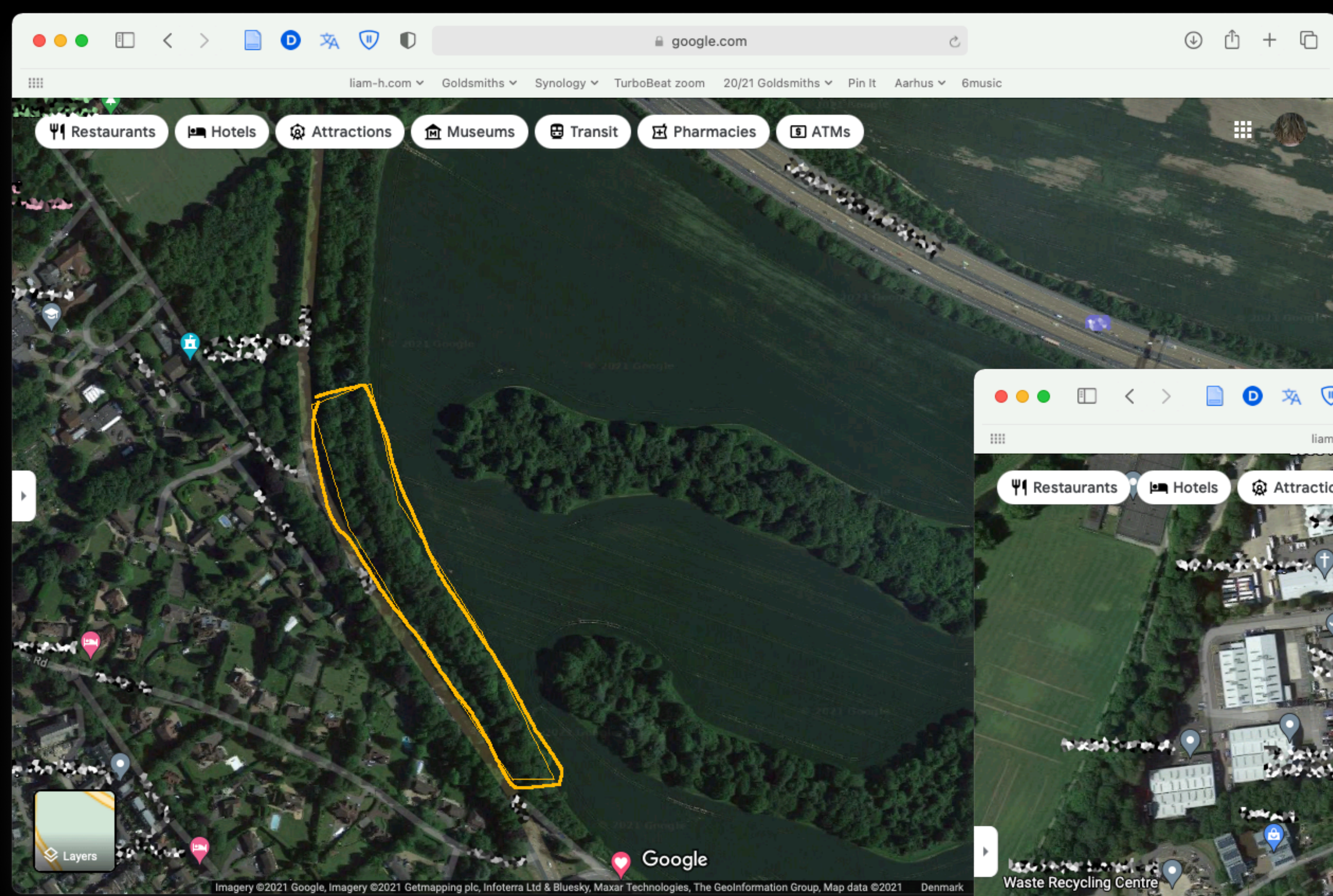
Liam Healy, EASST 2022

1. From 'action' to maintenance

[At Posh] there isn't a lot of creative input necessary, I'm like the
Caretaker,
[...]
in the grand scheme of things, it's probably like 70% caretaking and
30% riding.

Brian (Posh Woods, Pennsylvania, USA)

2. Spaces left over after planning



google.com

liam-h.com Goldsmiths Synology TurboBeat zoom 20/21 Goldsmiths Pin It Aarhus 6music

Revolution Bike Park

Restaurants Hotels Attractions Transit Parking Pharmacies

Revolution Bike Park
 4.9 ★★★★★ 553 reviews
 Outdoor activity organiser

Directions Saved Nearby Send to your phone Share

★ Saved in Starred places
[View list](#)

Llangynog, Oswestry SY10 0EP, United Kingdom
 Closed today
 Health and safety: Appointment required
 revolutionbikepark.co.uk
 +44 1691 860965

Layers

Imagery ©2021 Getmapping plc, Imagery ©2021 Bluesky, Infoterra Ltd & COWI A/S, CNES / Airbus, Getmapping plc, Denmark Terms Privacy Send feedback

google.com

liam-h.com Goldsmiths Synology TurboBeat zoom 20/21 Goldsmiths Pin It Aarhus 6music

Posh woods

Restaurants Hotels Attractions Transit Parking Pharmacies ATMs

Posh Woods
 4.7 ★★★★★ 7 reviews
 BMX park

Directions Save Nearby Send to phone Share

Bethlehem, PA 18020, United States
 JMR8+C3 Bethlehem, Pennsylvania, USA
 Claim this business
 Add a label
 Suggest an edit

Add missing information

- Add place's phone number
- Add hours
- Add website

Layers

Imagery ©2022 Google, Imagery ©2022 Maxar Technologies, PA Department of Conservation and Natural Resources-PAMAP/USGS, USDA/FPAC/Geo, Map data ©2022 Google, Denmark Terms Privacy 100 m

google.com

liam-h.com Goldsmiths Synology TurboBeat zoom 20/21 Goldsmiths Pin It Aarhus 6music

Holmen Dirt Jump n Pump Track

Restaurants Hotels Attractions Transit Parking Pharmacies

Holmen Dirt Jump n Pump Track
4.7 ★★★★★ 21 reviews
Sports complex

Directions Saved Nearby Send to your phone Share

Saved in Trails for research
Add note View list

1436 Copenhagen
1436 København
Open now: Open 24 hours
holmendirt.dk
26 31 78 88

Netto Airtame Fitness World CSR - Nanok Rugby Klub Hal C closed Landsforbundet DUI-LEG og VIRKE Spejdercenter Holmen K-polo Christiania Strand

Halvtov Zen Spaces Paul Schwartz Paff Prod v/Peter F

Google

Imagery ©2021 Google, Imagery ©2021 Aerodata International Surveys, CNES / Airbus, Lantmäteriet/Metria, Maxar Technologies, Scankort, Map data ©2021 50 m



The screenshot shows the Trash Free Trails website. The browser address bar displays "trashfreetrails.org". The navigation menu includes "CLEAN TRAILS", "EDUCATION", "RESEARCH", and "COMMUNITY", along with social media icons for Instagram, Twitter, and Facebook, and a "DONATE" button. The main content area features a large banner for the "HALLOWEEN TRAIL CLEAN TOUR" from October 22nd to 31st, 2021. The banner includes the Trash Free Trails logo, a "TAKE PART" button, and logos for sponsors: Cotswold Outdoor, Trek, Bosch, The North Face, EOGA, and Red Bull. Below the banner, a black box contains the text: "WE EXIST TO PROTECT OUR TRAILS AND THE WILD PLACES THEY TAKE US." To the right of this text is a circular graphic with the Trash Free Trails logo in the center and the words "REPEAT", "REMOVE", "REPORT", and "REWARD" around the perimeter. Below this is the "OUR MISSION" section, which states: "To reduce single-use pollution (aka; litter!) on our trails and wild places by 75% by 2025 and (re)connect people with nature through purposeful adventure." To the right of the mission statement is the "DIO" section, which says: "To encourage and empower each other to DO IT OURSELVES (DIO). We can all make a".

TRASH FREE TRAILS

CLEAN TRAILS EDUCATION RESEARCH COMMUNITY

HALLOWEEN TRAIL CLEAN TOUR

22 - 31ST OCTOBER 2021

TAKE PART

COTSWOLD outdoor TREK BOSCH THE NORTH FACE x EOGA Red Bull

WE EXIST TO PROTECT OUR TRAILS AND THE WILD PLACES THEY TAKE US.

REPEAT REMOVE REPORT REWARD

TRASH FREE TRAILS

OUR MISSION

To reduce single-use pollution (aka; litter!) on our trails and wild places by 75% by 2025 and (re)connect people with nature through purposeful adventure.

DIO

To encourage and empower each other to DO IT OURSELVES (DIO). We can all make a

Open "https://www.trashfreetrails.org/halloween-trail-clean-tour" in a new tab

3. Neglected things vs secrets: Exclusion as maintenance practice

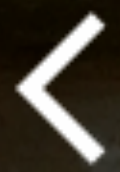


‘You didn't go down there unless you knew somebody, or you got the OK from somebody. So, there are a lot of stories about [locals] yelling, “get out of here”, “you got to dig!”’

Brian

‘when trails get ploughed, people's lives stop for a long time. Something died, [they] lost something that [they] invested so much into. People don't get that unless you have a spot ploughed. You have no idea what that feels like. [...] when people are so protective of trails and people coming in, it's because of that experience of loss.’

Carley (Multiple spots, Pennsylvania, USA)



TAKE CARE OF

DIRT JUMP PARK

Danish



English



DO NOT CLIMB ON JUMPS AND

LANDINGS

• DON'T GRAVE AND DESTROY JUMPS

AND LANDINGS

• PLEASE MAINTAIN

- BUT DO NOT REPAIR

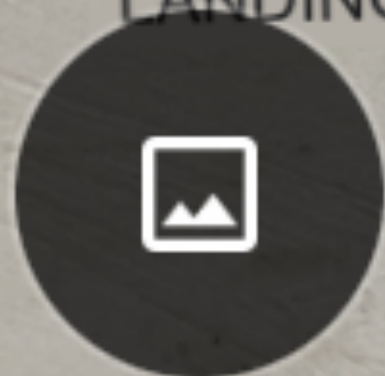
NEW JUMPS AND LINES CAN

BE MADE ON THE GREAT

AREA OUTSIDE THE

MAINTAINED JUMPS AND

LANDINGS



Rules of order for Aarhus Dirt Jump Park

- Crawling or running around on the jumps is forbidden - it causes the ground to slip off the sides and significantly burdens the maintenance work
- All tracks are unidirectional, ie. you pull / cycle back to the start next to the tracks and do NOT drive back by the same road you have driven down.
- Helmet, gloves and knee pads are recommended.
- All types of motor vehicles are prohibited for use in the area.
- Take your rubbish with home animals and pawnbrokers rummage through the rubbish bins and leave a mess, so we no longer have rubbish bins in the park.
- The park is maintained by a small number of volunteer enthusiasts, so show respect and take care of the park.
- In the event of an accident, the park's address is Paludan Müllers Vej 112, 8200 Aarhus N.

Commons are structured by relations of care rather than ownership. They emerge from entanglement with, rather than separation from, an often hostile environment. To create such different relationships, commons need adapted (technological) infrastructures, and they bring forth their specific institutional forms. This, it is important to stress, does not create ideal situations or replicable models, but practical tools, experiences and stories through which to think, because, 'it matters what stories tell stories'.

(Sollfrank et al., 2021:22)

CATTY X POSH



AUGUST 28TH | CATTY WOODS
AUGUST 29TH | POSH WOODS



4. Change of the guard: Caring for emergent participation

There's this fear that there's going to be a disconnect that when this group of legendary trail builders are all done [...] who's going to come up and take over the trails?!

Carley

From the start we didn't want to get picked up by the commune too much... But then, you know, if we do it like that, you don't get to grow, you don't get to get really good facilities.

Behroz (Holmen Dirt, Copenhagen, Denmark)



Maintenance not neutral(!)

Rules and governance dictated by the communities key to maintenance

Secrecy can be paramount to its maintenance.

Political structures shifting from local 'elders' to traditional forms of politics.

Thanks!