

Aig Muir

At Sea

Location of works:

1. Into the silent sea
16mm film, wool 2023
Alasdair Asmussen, en Doyle
2. Leaving
Textile Print, 2023
Alasdair Asmussen Doyle
3. From there to here
Book, 2023
Rachael Louise Bailey
4. '57.81244°N, 8.57757°W'
Glass, water, 2023
Rachael Louise Bailey
5. The Wave and the Womb
Sculptural sound installation, 2023
Beatrice Alvestad Lopez
6. Treasure Trove
Ceramic, 2023
Beatrice Alvestad Lopez
7. Deep Sea Range 1 and 2
Giclee prints, 2023
Bethany Rigby
8. Navigation Plaque
Etched mild steel, 2023
Bethany Rigby
9. At Sea
Video, 2023
Bethany Rigby
10. Navigating Technologies
Film, 10 mins, 2023
Dan Shay, sound by Ross Whyte
11. Navigating Technologies
Digital prints, 2023
Dan Shay
12. 'Missing'
Digital print, 2023
Dan Shay

01.12.2023 - 20.01.2024
An Lanntair Gallery

An exhibition of new work by
Rachael Louise Bailey
Alasdair Asmussen Doyle
Beatrice Alvestad Lopez
Bethany Rigby
Dan Shay

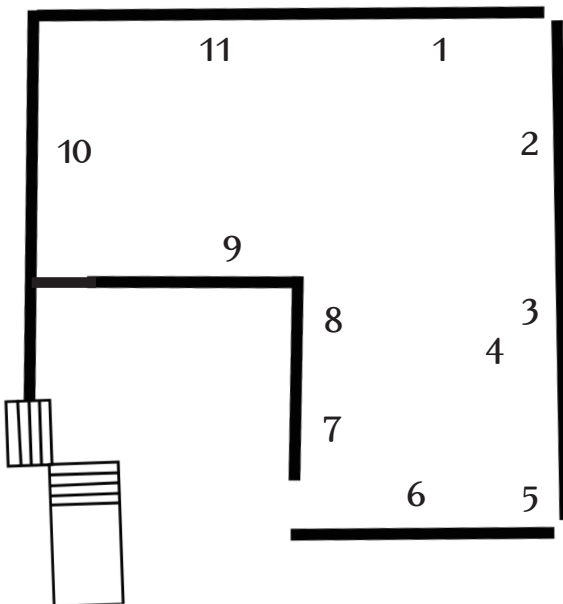
"At Sea" holds the hybrid meanings of being on a vessel out of sight of land, and of experiencing a state of confusion or mentally adrift. The artwork reflects the journey we have all been through over recent years and traverses a lasting impression of Hebridean exploration.

In July 2019, five artists undertook a sailing expedition heading west from Berneray to the remote islands of St Kilda. The residency (titled *Island Going*) presented an embodied invitation into sea and island ecologies, atmospheres and terrains, and stretched across the longest days of the year- 6 of which were spent at sea, followed by four on land.

Almost five years later, the artists return with works that stem directly from their shared experience at sea. Using the land and seascapes as a research arena, the artists approach topographies of remoteness, liquidity, navigation, migration, isolation and communication.

All of the works exhibited use materials gathered during the expedition, including wool, photographs, film and water. This exhibition presents the opportunity to share, question, learn, remember, wonder and reflect.

The 2019 Island Going residency was guided by skipper Andy Roger and Meg Roger of Ocean Guides Hebrides, curated by Jon MacLeod and hosted by An Lanntair.



Exhibition generously supported by An Lanntair, Goldsmiths University of London, Hope Scott Trust, Swedish Arts Grants Committee and the Office for Contemporary Art Norway

The artists extend special thanks to Andy Rodger and Meg Rodger of Ocean Guides Hebrides, and Jon MacLeod.



Alasdair Asmussen Doyle is an artist and researcher based between Belfast and Brussels. His practice draws upon moving-image and filmic heritage to navigate multiple relations of physical places and films.

Alasdair's film installation Into the silent sea explores the island's unique populace of wild Soay (Soay meaning "sheep island" in Norse) that have roamed St. Kilda over the past 3000-4000 years. Considered to be one of the most primitive sheep breeds in existence today, the animal's hardy fleece was the source of numerous uses and gave rise to grounded textiles methods that reflected the ways that people lived in the landscape. Throughout the Island Going residency, Alasdair echoed the practices of the former St. Kildans by foraging wool across the island. This gathered material is then projected through 16mm film, establishing a link across time, observing loss and the embodied memory that surfaces. The installation includes an image from the archives of the Royal Scottish Geographical Society, depicting a spinning wheel and other household on Oban Pier belonging to the residents who were evacuated from the island on 30th August 1930.

The film is turned on by request.

Dan Shay is based in Glasgow. His work explores our relationship with technology and its effect on our experience of the world, through live performance, installation, experimental moving image, and print. Dan thanks the support of Hope Scott Trust.

Dan creates artworks exploring our relationship with technology and its effect on our experience of the world, realised through projected visuals for live performance, installation, experimental moving image and print.

As part of his project Navigating Technologies, Dan is presenting a series of digital prints alongside a film. This experimental film uses layers of projected digital and 16mm film from a 2019 sail to St. Kilda to paint a journey at sea. The film explores our relationship with technology, inviting us to reflect on how we have learned to navigate the sea, as a metaphor for how we manage our journey into new oceans of digital information we live in today.

Bethany Rigby is a London based artist. Her work centres on communication technologies and how we experience and use landscapes.

Her video piece At Sea takes footage captured on the return voyage from St Kilda and conveys the

inertia experienced by the artist whilst at sea and the rolling sensation that persisted for days after reaching land.

Deep Sea Range 1 and 2 are photographs taken of, and from the Mullach Mòr radar base, a sensing station within the Hebrides missile tracking system known as Deep Sea Range.

Navigation Plaque collates wayfinding diagrams and coastal viewpoints specific to the expedition from Berneray to St Kilda. The piece draws on the design of sea charts, tracking data and interstellar expedition plaques such as Nasa's Pioneer plaques. The tracking data was collated from the Island Going sailboat's OpenCPN on-board navigation software, navigated and shared by skipper Andy Rodger.

Rachael Louise Bailey lives in Kent. Her practice involves the study and manipulation of materials, in particular those deemed as insignificant waste.

The Island Going residency has permeated Rachael's practice over the past 4.5 years and resulted in a large body of work. The book, From there to here, pieces together the threads of that journey.

The glass ovoid contains fresh water collected from a rivulet on the hillside just above the Village Bay, St Kilda 19th June 2019. Paying homage to our fast disappearing fauna and flora, '57.81244°N, 8.57757°W' also marks the beginning of a new project, 'A National Portrait' which will dominate her practice in 2024.

Beatrice Alvestad Lopez is a visual artist based in Oslo/Stockholm. Her work moves between performative film, sound, installation, and material-based techniques. Environmental narratives and bodily relations are central.

For At Sea, Beatrice's sculptural sound installation The wave and the womb consists of carved wood, a thread of seashells/pearls and the inbuilt sound of a text recital, written shortly after the trip to St. Kilda. Beatrice recounts the voyage at sea, the embodied and metaphorical ways of being moved by the waves to the cosmological beginnings of elemental forces. The installation also consists of a clay sculpture, as an aquatic and womb like form. Included is the publication HydroBody, a booklet containing photos from the landscape and patterns from the voyage.